

## **LLCT's Pollinator Action Plan Sites**

**Lincoln Station Garden**

**Codman/Rte 126 Roadside Garden**

**Harrington Parking Lot Garden**

**People for Pollinators Meadow**

**Birches School**

**Chapman Pasture**

Please use caution when parking on roadsides. Download the OuterSpatial App for best/most accurate trail maps. Questions can be emailed to [llct@lincolnconservation.org](mailto:llct@lincolnconservation.org)

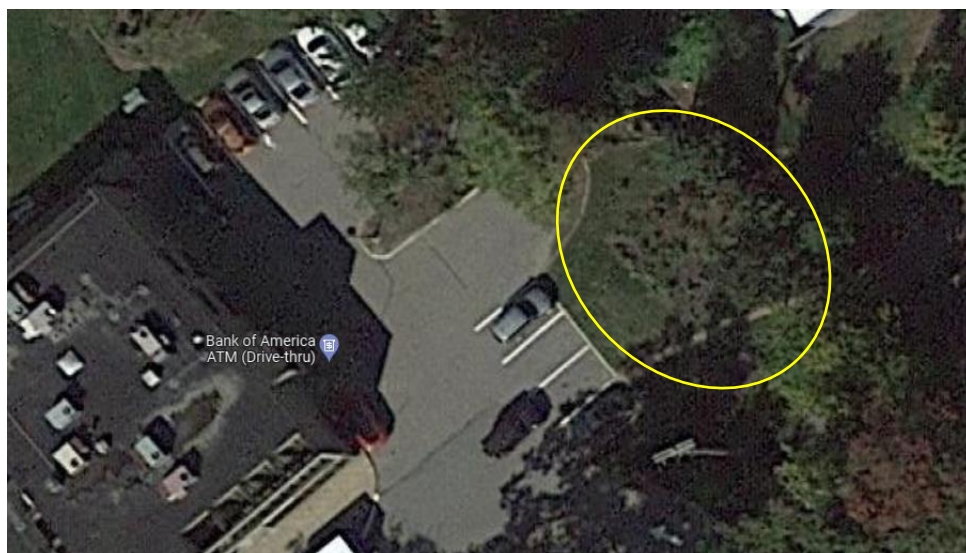
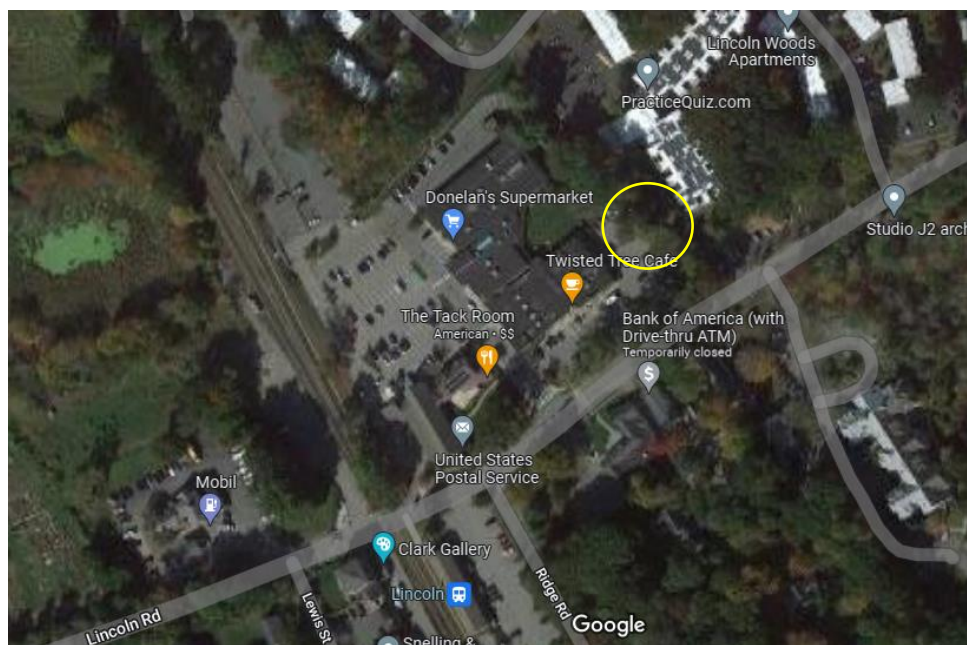
## Lincoln Station Demonstration Garden

145 Lincoln Rd, Lincoln MA

Park by the Twisted Tree Café/Bank of America. When facing the building, look to your right. The garden is along the fence line and is split into two sections, separated by a walking path.

This site was first planted in Spring of 2020 with a variety of shrubs. LLCT added more shrubs and perennials in 2021 and 2022. This garden is now on its third growing season.

It was first watered by hand via a rain barrel located by the Bank of America entrance. LLCT has since installed an irrigation system.





## Lincoln Station Demonstration Garden

145 Lincoln Rd, Lincoln MA

Abridged Plant List: Beach Plum, Virginia Rose, Carolina Rose, Meadowsweet, Steeplebush, Shubby St. John's Wort, Northern Bush Honeysuckle, Tall White Aster, Lowbush Blueberry, Big Bluestem, Buttonbush, Rhododendron, Salix, Blue-stemmed Goldenrod, Butterfly Weed, Foxglove Beardtongue, Hairy Beardtongue, Native Bergamot, Purple Giant Hyssop, Showy Goldenrod, Sweet Goldenrod, Scarlet Bee Balm.

Many of the perennials are still getting established and LLCT continues to add more plants to the site.





## Codman/Rte 126 Roadside Garden

Google Map Pin: <https://goo.gl/maps/WmsVsBukz6ezcf8R7>

This garden is located in the small island on Codman Road at the intersection with Route 126. There is space to park at the side of the road on Codman Road. Please use care when using the crosswalk to access the garden. Many of the plants are still getting established and are quite small, so please step carefully if entering the garden space.

This site was first planted in Spring of 2021 and LLCT continues to add more plants to the site. Two rain barrels are located by the roadside path on Codman Rd and serve as convenient water storage during the summer.





## Codman/Rte 126 Roadside Garden

Google Map Pin: <https://goo.gl/maps/WmsVsBukz6ezcf8R7>

Abridged plant list: Blue-stemmed Goldenrod, Butterfly Weed, Foxglove Beardtongue, Hairy Beardtongue, Purple Giant Hyssop, Showy Goldenrod, Wild Lupine, Big Bluestem, Scarlet Bee Balm, Shrubby St. John's Wort, Wild Geranium, Pennsylvania Sedge, Little Bluestem, Calico Aster, Switchgrass.



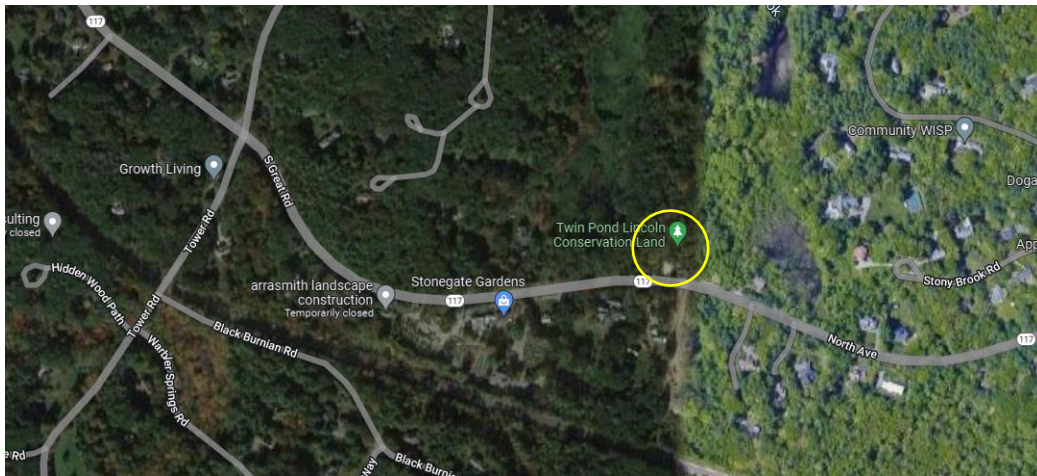


## Harrington Parking Lot Garden

Google Map Address: Twin Pond Lincoln Conservation Land

This garden is located at the Harrington/Twin Pond Trailhead Parking Lot. The parking area is a small dirt lot on Route 117 in Lincoln, MA. The lot is located near the Lincoln/Weston Border and is on the north side of the road. When looking at the parking lot from the road, the garden site is to your left.

Many of the plants are still getting established and are quite small, so please step carefully if entering the garden space. This site was first planted in Spring of 2021 and LLCT continues to add more plants to the site. Two rain barrels are located a short distance from the garden as convenient water storage. This site experiences strong weed pressure from the edges (garlic mustard, etc).





## Harrington Parking Lot Garden

Google Map Address: Twin Pond Lincoln Conservation Land

Abridged plant list: Blue-stemmed Goldenrod, Butterfly Weed, Foxglove Beardtongue, Hairy Beardtongue, Purple Giant Hyssop, Showy Goldenrod, Wild Lupine, Big Bluestem, Scarlet Bee Balm, Shrubby St. John's Wort, Wild Geranium, Pennsylvania Sedge, Little Bluestem, Calico Aster, Switchgrass, Meadowsweet, Northern Bush Honeysuckle, Beach Plum, Field Discolor.





## People for Pollinators Meadow (Pollinator Meadow)

Google Map Pin: <https://goo.gl/maps/qwsk4KgT6vDep59U7>

The Pollinator Meadow is located at the southern end of a field behind the Lincoln Public Schools. Generally, the meadow can be easily accessed via the public parking lot by the Smith School and the Lincoln Tennis Courts. However, due to school construction, **that lot is currently closed (as of Summer 2022)**. Visitors can access the meadow by parking by the Codman Pool and taking the trail behind the schools to the meadow. There is also trail access from MacKintosh Lane but there is no public parking allowed. Visitors eager for a long walk can park at Lincoln Station and wind their way through the Bergen-Culver lands toward the meadow.

Established in 2016, the Pollinator Meadow is LLCT's oldest site. The fenced in area hosts an established perennial meadow. More recently (2020-present) LLCT has been adding shrubs and trees to the area surrounding the fenced in meadow. In 2022 LLCT completed a structure that will provide shade/shelter to visitors and collect rainwater for the meadow.

Visitors are welcome! Please be sure the fence gate is securely closed when you leave the meadow. No dogs/pets inside the fenced area and they should be leashed throughout the site.





## People for Pollinators Meadow (Pollinator Meadow)

Google Map Pin: <https://goo.gl/maps/qwsk4KgT6vDep59U7>

Abridged plant list: Switchgrass, Swamp Rose, Buttonbush, Meadowsweet, Steeplebush, Northern Bush Honeysuckle, lowbush Blueberry, Virginia Rose, Bur Oak, Bebb's Willow, Meadow Willow, Shining Willow, Prairie Willow, Obedient Plant, Showy Goldenrod, Prunella, Bayberry, Inkberry, Sweet Pepperbush, Winterberry, American Witch hazel, Monarda fistulosa, Northeastern Beardtongue, Mountain Mint, Golden Alexanders, Anise Hyssop, New England Aster, Baptisia, Scarlet Bee Balm.



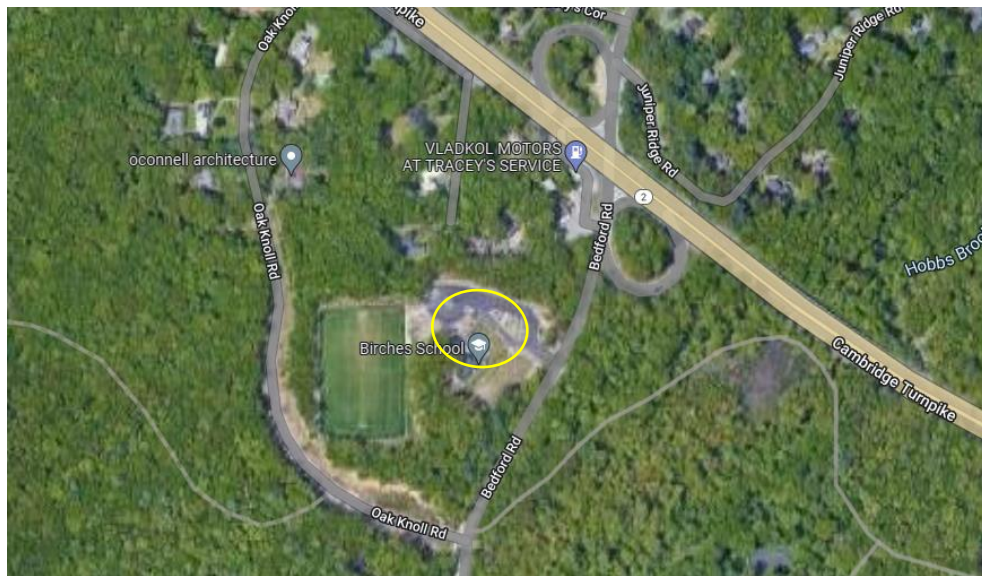


## Birches School

100 Bedford Rd, Lincoln MA

The Birches School has been an important partner in LLCT's Pollinator Initiative. In 2020 after the Lincoln Pollinator Action Plan was published, a group of parents at the school led the implementation of the Plan's custom garden design. The parents worked to keep existing plants and add in the recommended plants. Now, a group of dedicated volunteers weed and water the site.

Please consider visiting on the weekends and after school hours during the school year, as parking can be tight while school is in session and students are often outside.





## Birches School

100 Bedford Rd, Lincoln MA

Abridged Plant List: Pennsylvania Sedge, Pasture Thistle, Northern Bush Honeysuckle, Tall White Aster, Joe-Pye Weed (various sp), St. John's Wort, Switchgrass, Northern Beardtongue, Prunella, Purple-flowering Raspberry, Little Bluestem, Early Goldenrod, Seaside Goldenrod, Zig-zag Goldenrod, White Meadowsweet, Hillside Blueberry, Violets.





## Chapman Pasture

Google Map Pin: <https://goo.gl/maps/UjPcs8Kbw4ypHA2D6>

Chapman Pasture is an 8-acre field, formerly grazed by sheep. As part of the Pollinator Action Plan, LLCT has conducted two prescribed burns to eliminate the non-native grasses that dominate the field. In Fall 2022, LLCT plans to sow a pollinator mix on the entire field.

The pasture is located between Old Winter Street and Silver Hill Road in Lincoln, MA. The field can be accessed via one of three trails. There is an area to park on the side of the road at Silver Hill Rd. The trail goes directly to Chapman Pasture. Visitors can also park at the bend in Old Winter Street and walk down the gravel driveway until they reach the trail sign. Take the trail up the hill and Chapman Pasture is at the top of the hill. Lastly, visitors can park at the Browning's Field Riding Ring and walk through the Pigeon Hill Conservation Area to reach the field. Please keep dogs on leash in the field as planting efforts are already underway.





## Chapman Pasture

Google Map Pin: <https://goo.gl/maps/UjPcs8Kbw4ypHA2D6>

In 2022, LLCT has sowed a spring cover crop to help keep the thatch down. The main pollinator planting will take place in the Fall. 30 willows and additional shrubs have been added to the rocky outcrops throughout the field. These are marked out with orange/yellow flags. LLCT has observed increased biodiversity in the field after the burns, even without planting efforts. More milkweed, pussy toes, St. Johns wort, and thistle have been observed.

