

Lincoln Pollinator Pathway Sites

Managed by LLCT

Lincoln Station Demonstration Garden

Codman Island

Codman Garden

Stony Brook Trailhead

Pollinator Meadow

Chapman Pasture

Managed by Other Organizations

Birches School's Garden

Umbrello Garden at Hannan Agro Farms

Lincoln Station by Lincoln Common Ground

*Visitors are welcome! Please use caution when parking on roadsides.
Download the OuterSpatial App for best/most accurate trail maps. No
dogs in the planted areas of these sites. Questions can be emailed to
llct@lincolnconservation.org*

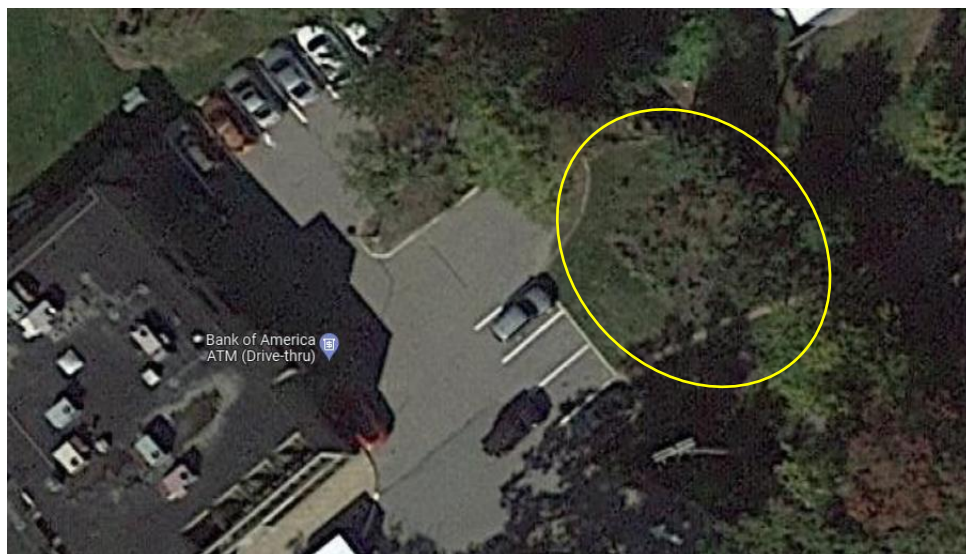
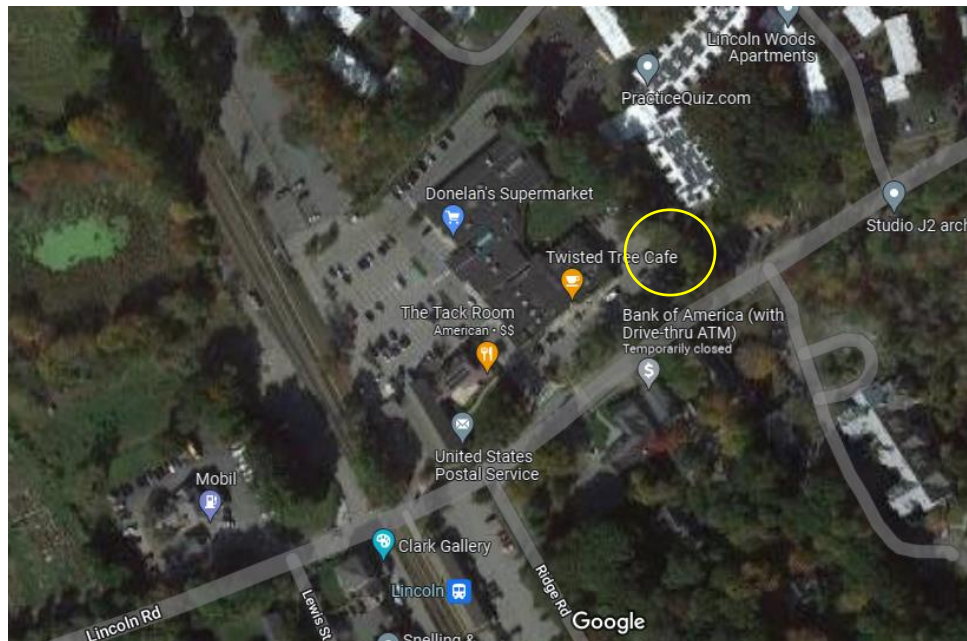
Lincoln Station Demonstration Garden

145 Lincoln Rd, Lincoln MA

Park by the Twisted Tree Café/Bank of America. When facing the building, look to your right. The garden is along the fence line and is split into two sections, separated by a walking path.

This site was first planted in Spring of 2020 with a variety of shrubs. LLCT added more shrubs and perennials in 2021 and 2022. In 2023, although mostly filled in, LLCT added a handful of new perennials to fill gaps in the garden.

It was first watered by hand via a rain barrel located by the Bank of America entrance. LLCT has since installed an irrigation system, but only waters plants that are still getting established.



Lincoln Station Demonstration Garden

145 Lincoln Rd, Lincoln MA

Abridged Plant List: Beach Plum, Virginia Rose, Carolina Rose, Meadowsweet, Steeplebush, Shubby St. John's Wort, Northern Bush Honeysuckle, Tall White Aster, Lowbush Blueberry, Big Bluestem, Buttonbush, Rhododendron, Salix, Blue-stemmed Goldenrod, Butterfly Weed, Foxglove Beardtongue, Hairy Beardtongue, Native Bergamot, Purple Giant Hyssop, Showy Goldenrod, Sweet Goldenrod, Scarlet Bee Balm.



LINCOLN STATION

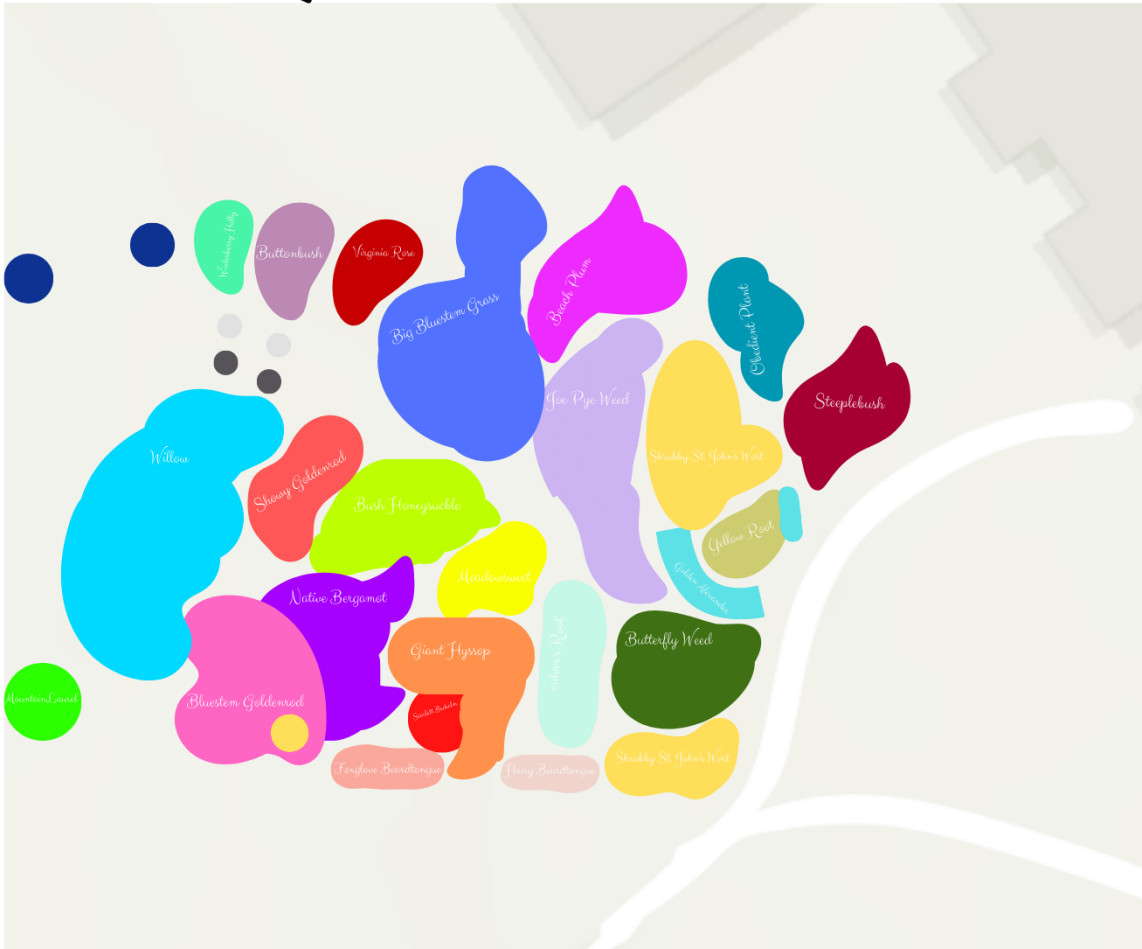
07/12/2023



LEGEND

- SHRUBBY ST. JOHN'S WORT
- BUTTERFLY WEED
- GOLDEN ALEXANDER
- OBEDIENT PLANT
- BIG BLUESTEM GRASS
- BLUESTEM GOLDENROD
- SHOWY GOLDENROD
- FOXGLOVE BEARDTONGUE
- HAIRY BEARDTONGUE
- SCARLETT BEEBALM
- GIANT PURPLE HYSSOP
- MEADOWSWEET
- NATIVE BERGAMOT

- MONKEYFLOWER
- CALICO ASTER
- YELLOW ROOT
- JOE PYE WEED
- STEEPLEBUSH
- BEACH PLUM TREE
- VIRGINIA ROSE
- BUTTONBUSH
- WINTERBERRY HOLLY
- RHODODENDRON
- MOUNTAIN LAUREL
- WILLOW
- CULVER'S ROOT
- BUSH HONEYSUCKLE



LINCOLN STATION

07/12/2023



LEGEND

- CAROLINA ROSE
- NATIVE BERGAMOT
- WILLOW
- BUSH HONEYSUCKLE
- STEEPLEBUSH
- BEACH PLUM TREE
- SHOWY GOLDENROD



Codman Island

Google Map Pin: <https://goo.gl/maps/WmsVsBukz6ezcf8R7>

This garden is located in the small island on Codman Road at the intersection with Route 126. There is space to park at the side of the road on Codman Road. Please use care when using the crosswalk to access the garden.

This site was first planted in Spring of 2021 and LLCT continues to add more plants to the site. Two rain barrels are located by the roadside path on Codman Rd and serve as convenient water storage during the summer.



Codman Island

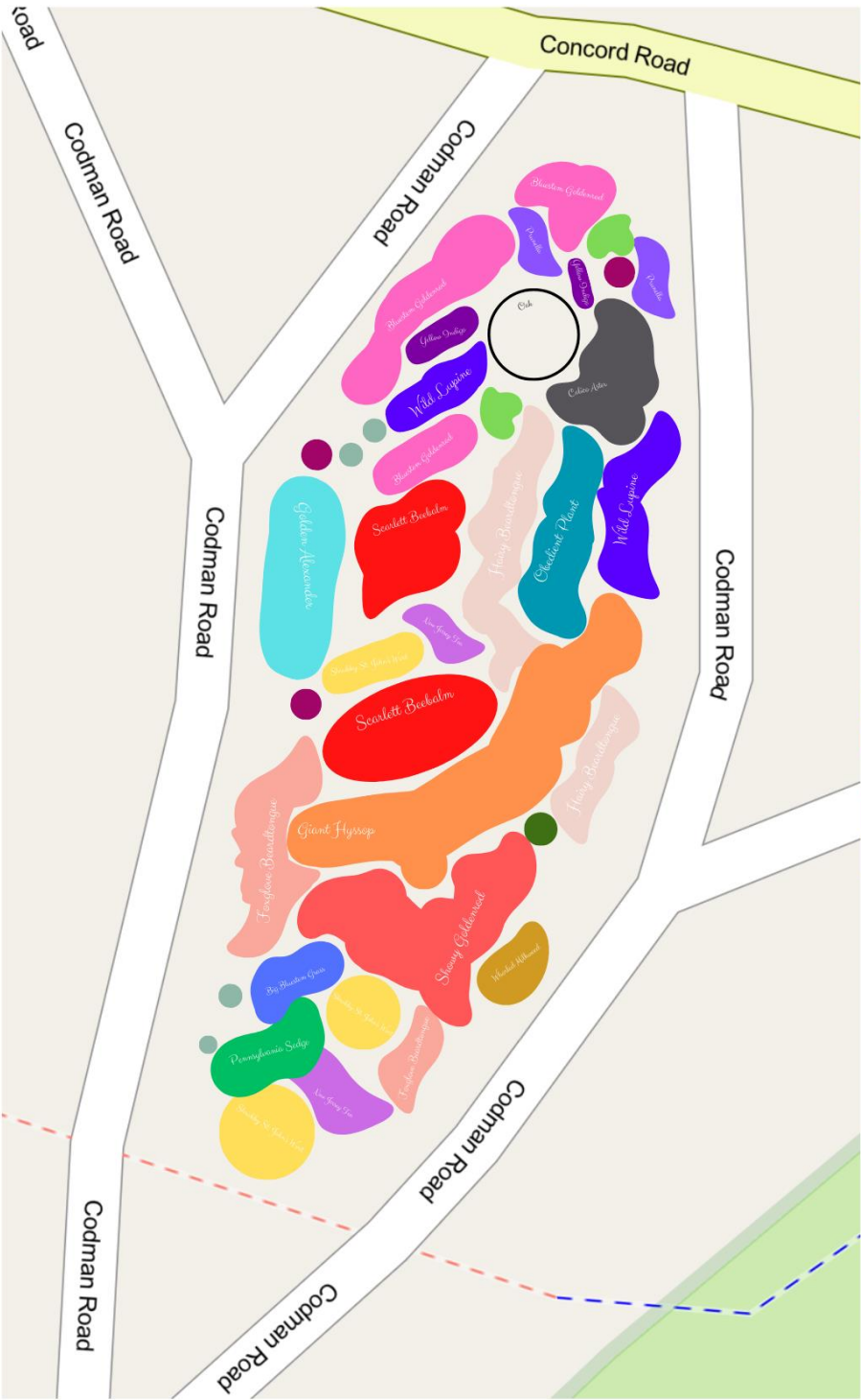
Google Map Pin: <https://goo.gl/maps/WmsVsBukz6ezcf8R7>

Abridged plant list: Blue-stemmed Goldenrod, Butterfly Weed, Foxglove Beardtongue, Hairy Beardtongue, Purple Giant Hyssop, Showy Goldenrod, Wild Lupine, Big Bluestem, Scarlet Bee Balm, Shrubby St. John's Wort, Wild Geranium, Pennsylvania Sedge, Little Bluestem, Calico Aster, Switchgrass.



CODMAN ISLAND

07/05/2023



LEGEND

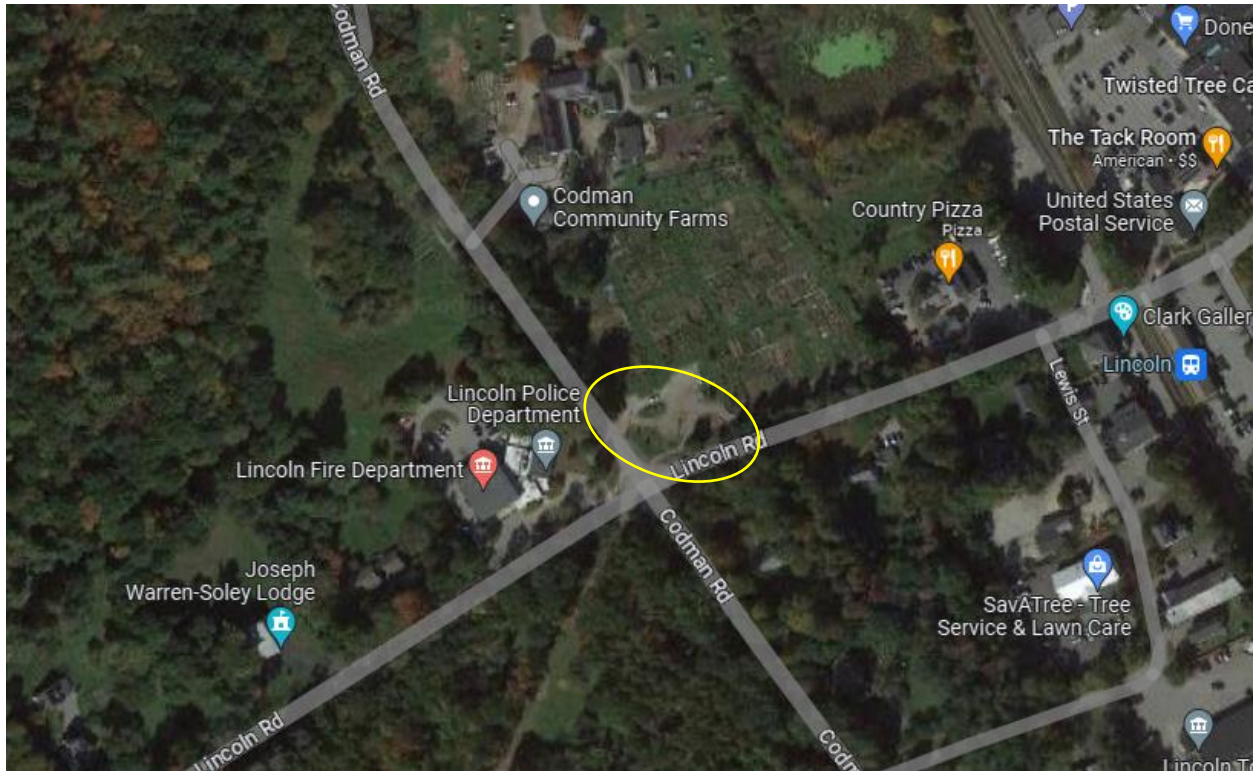
- PENNSYLVANIA SEDGE
- LITTLE BLUESTEM GRASS
- BIG BLUESTEM GRASS
- PRUNELLA
- SHRUBBY ST. JOHN'S WORT
- NEW JERSEY TEA
- FOXGLOVE BEARDTONGUE
- HAIRY BEARDTONGUE
- GIANT HYSSOP
- SHOWY GOLDENROD
- BLUESTEM GOLDENROD
- SCARLETT BEEBALM
- BUTTERFLY WEED
- GOLDEN ALEXANDER
- OBEDIENT PLANT
- WILD LUPINE
- WILD GERANIUM
- YELLOW INDIGO
- CALICO ASTER
- BIRD FOOT'S VIOLET
- WHORLED MILKWEED

Codman Garden

Google Map Pin: <https://goo.gl/maps/TTN7FmAfXrLPhhgs9>

This garden is located between the row of Magnolia Trees on Lincoln Road and the parking area for the Codman Community Gardens.

LLCT received permission from the Roadside Traffic Committee and Codman Farms to plant this garden in Spring 2023. The Lincoln Garden Club generously gave a grant to cover the cost of the initial planting effort. Nearly 200 plants represent 20 species of native, pollinator supporting perennials and shrubs. LLCT accesses a spigot at the Community Gardens to water the garden.



Codman Garden

Google Map Pin: <https://goo.gl/maps/TTN7FmAfXrLPhhgs9>

Abridged Plant List: Virginia Rose, Golden Alexander, Scarlet Bee Balm, Native Bergamot, Hairy Beardtongue, Calico Aster, Whorled Milkweed, Big Bluestem, Little Bluestem, Early Goldenrod, Sweet Goldenrod.

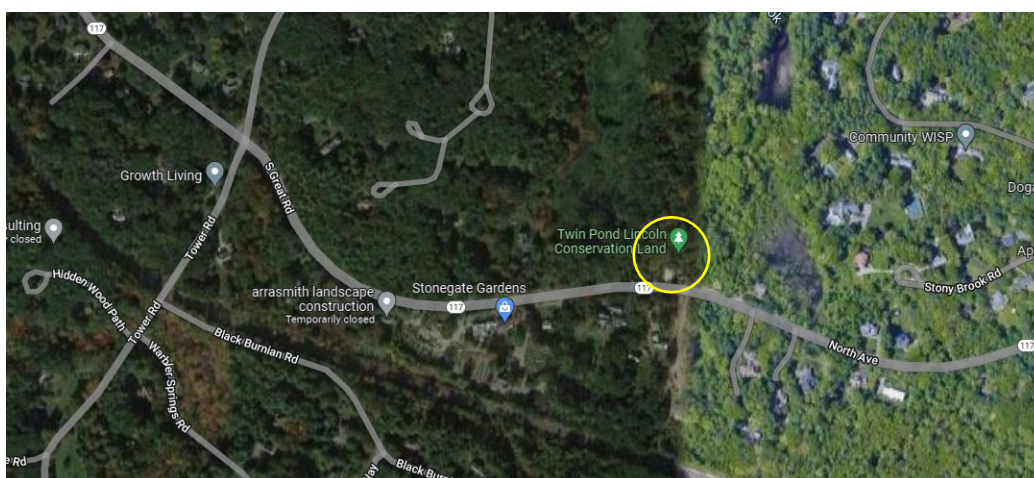


Stony Brook Trailhead

Google Map Address: Twin Pond Lincoln Conservation Land

This garden is located at the Stony Brook/Twin Pond Trailhead Parking Lot. The parking area is a small dirt lot on Route 117 in Lincoln, MA. The lot is located near the Lincoln/Weston Border and is on the north side of the road. When looking at the parking lot from the road, the garden site is to your left.

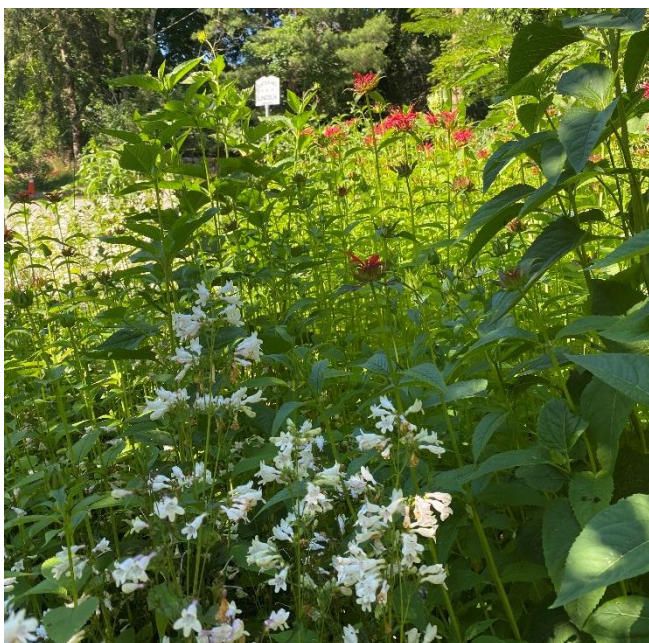
This site was first planted in Spring of 2021 and LLCT continues to add more plants to the garden. Two rain barrels are located a short distance from the garden as convenient water storage. This site experiences strong weed pressure from the edges.



Stony Brook Trailhead

Google Map Address: Twin Pond Lincoln Conservation Land

Abridged plant list: Blue-stemmed Goldenrod, Butterfly Weed, Foxglove Beardtongue, Hairy Beardtongue, Purple Giant Hyssop, Showy Goldenrod, Wild Lupine, Big Bluestem, Scarlet Bee Balm, Shrubby St. John's Wort, Wild Geranium, Pennsylvania Sedge, Little Bluestem, Calico Aster, Switchgrass, Meadowsweet, Northern Bush Honeysuckle, Beach Plum, Field Discolor.



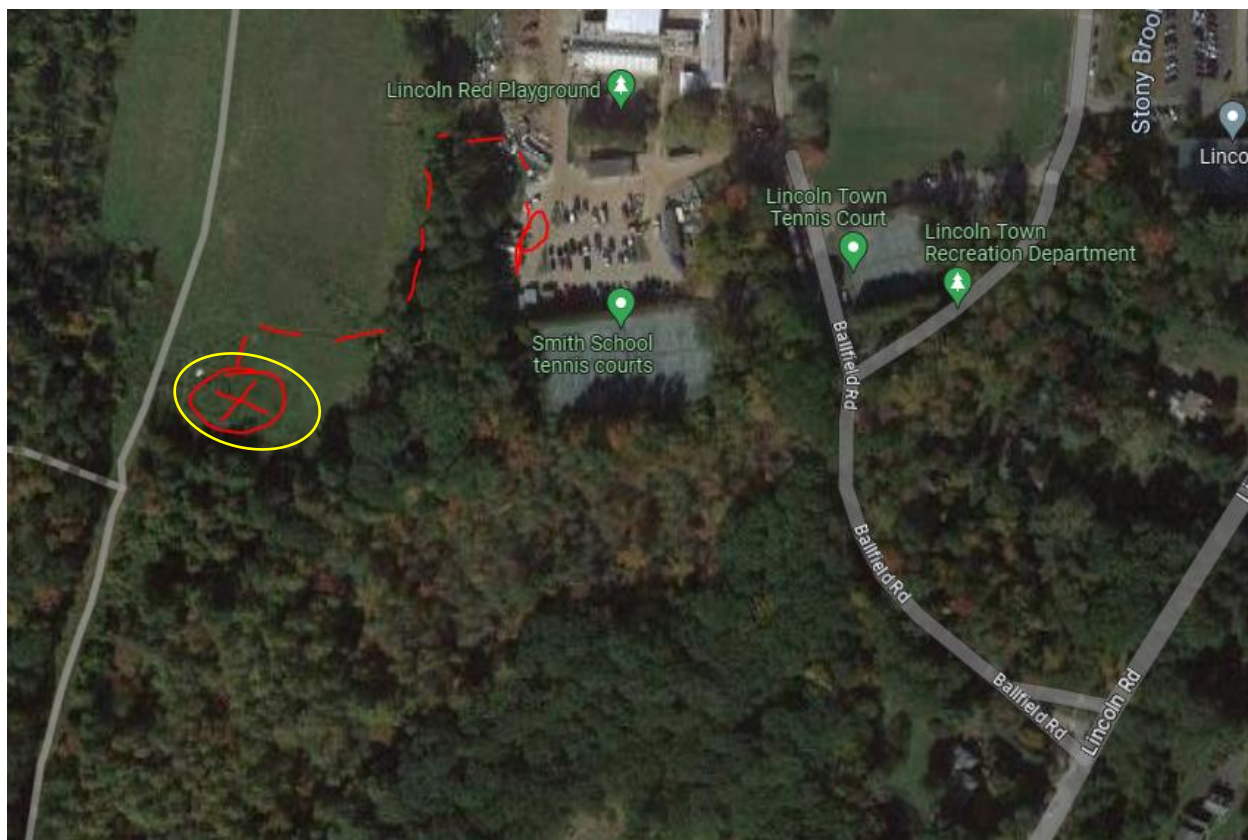
LLCT Pollinator Meadow

Google Map Pin: <https://goo.gl/maps/qwsk4KgT6vDep59U7>

The Pollinator Meadow can be accessed by parking at the Smith School Tennis Courts and taking the trail through the nearby field. It is a short walk and generally there is plenty of parking outside of school hours.

Established in 2016, the Pollinator Meadow is LLCT's oldest site. The fenced in area hosts an established perennial meadow. More recently (2020-present) LLCT has been adding shrubs and trees to the area surrounding the fenced in meadow. LLCT continues to plant in the original fenced meadow, as some areas are dominated by non-native grasses. In 2022 LLCT completed a pavilion that provides shade/shelter to visitors and collects rainwater for the meadow.

Please be sure the fence gate is securely closed when you leave the meadow. No dogs/pets inside the fenced area and they should be leashed throughout the site.



LLCT Pollinator Meadow

Google Map Pin: <https://goo.gl/maps/qwsk4KgT6vDep59U7>

Abridged plant list: Switchgrass, Swamp Rose, Buttonbush, Meadowsweet, Steeplebush, Northern Bush Honeysuckle, lowbush Blueberry, Virginia Rose, Bur Oak, Bebb's Willow, Meadow Willow, Shining Willow, Prairie Willow, Obedient Plant, Showy Goldenrod, Prunella, Bayberry, Inkberry, Sweet Pepperbush, Winterberry, American Witch hazel, Monarda fistulosa, Northeastern Beardtongue, Mountain Mint, Golden Alexanders, Anise Hyssop, New England Aster, Baptisia, Scarlet Bee Balm.



Chapman Pasture

Google Map Pin: <https://goo.gl/maps/UjPcs8Kbw4ypHA2D6>

Chapman Pasture is an 8-acre field, formerly grazed by sheep. As part of the Pollinator Action Plan, LLCT has conducted two prescribed burns to eliminate the non-native grasses that dominate the field. After both burns, LLCT planted shrub groupings around the field. In Fall 2022, LLCT sowed a pollinator-supporting seed mix on a half-acre portion of the field.

The pasture is located between Old Winter Street and Silver Hill Road in Lincoln, MA. The field can be accessed via one of three trails. There is an area to park on the side of the road at Silver Hill Rd. The trail goes directly to Chapman Pasture. Visitors can also park at the bend in Old Winter Street and walk down the gravel driveway until they reach the trail sign. Take the trail up the hill and Chapman Pasture is at the top of the hill. Lastly, visitors can park at the Browning's Field Riding Ring and walk through the Pigeon Hill Conservation Area to reach the field. Please keep dogs on leash in the field.



Chapman Pasture

Google Map Pin: <https://goo.gl/maps/UjPcs8Kbw4ypHA2D6>

Since the first prescribed burn, LLCT has observed increased biodiversity in the field. Planting efforts have included more than 30 willows and additional shrubs, as well as a perennial seed mix.



Birches School

100 Bedford Rd, Lincoln MA

The Birches School has been an important partner in LLCT's Pollinator Initiative. LLCT included a planting plan for the school in the Lincoln Pollinator Action Plan. A group of parents organized in spring of 2020 to plant the new school garden. Now, the garden is maintained by the school community.

Please consider visiting on the weekends and after school hours during the school year, as parking can be tight while school is in session and students are often outside.



Birches School

100 Bedford Rd, Lincoln MA

Abridged Plant List: Pennsylvania Sedge, Pasture Thistle, Northern Bush Honeysuckle, Tall White Aster, Joe-Pye Weed (various sp), St. John's Wort, Switchgrass, Northern Beardtongue, Prunella, Purple-flowering Raspberry, Little Bluestem, Early Goldenrod, Seaside Goldenrod, Zig-zag Goldenrod, White Meadowsweet, Hillside Blueberry, Violets.



Umbrello Garden at Hannan Agro Farms

270 South Great Road

In spring 2023, Tom Flint and Mohammed Hannan reached out to LLCT about the creation of a new pollinator garden adjacent to the farm fields. LLCT happily donated more than 60 perennial plants to a new garden that was planted by volunteers and will be maintained by Hannan Agro Farms.



Umbrello Garden at Hannan Agro Farms

270 South Great Road

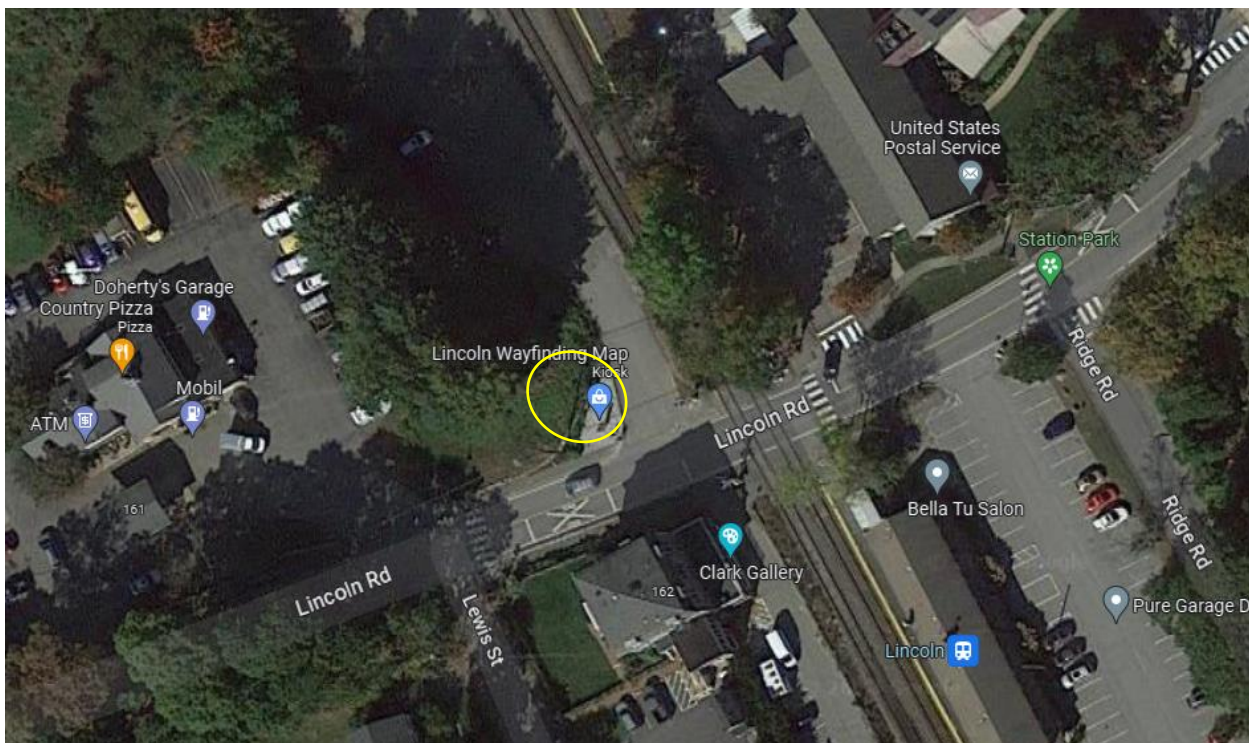
Abridged Plant List: Big Bluestem, Little Bluestem, Early Goldenrod, Sweet Goldenrod, Golden Alexanders, Calico Asters, Joe-pye Weed, Native Bergamot.



Lincoln Station by Lincoln Common Ground

Google Pin: <https://goo.gl/maps/Tyq8XHARhS3EGGEZ7>

Located just behind the stonewall at the Lincoln Wayfinding Map, at the corner of Lincoln Road and the Lincoln Commuter Parking Lot, this garden was planted in spring 2023. Lincoln Common Ground, under the leadership of Diana Rice Sheahean, designed, planted, and will maintain this garden. The group received permission from the Roadside Traffic Committee to add this site.



Lincoln Station by Lincoln Common Ground

Google Pin: <https://goo.gl/maps/Tyq8XHARhS3EGGEZ7>

Abridged Planting List: Big Bluestem, Virginia Rose, Heart-leaf Golden Alexander, Hairy Beardtongue, Sweet Goldenrod, Butterfly Weed.

