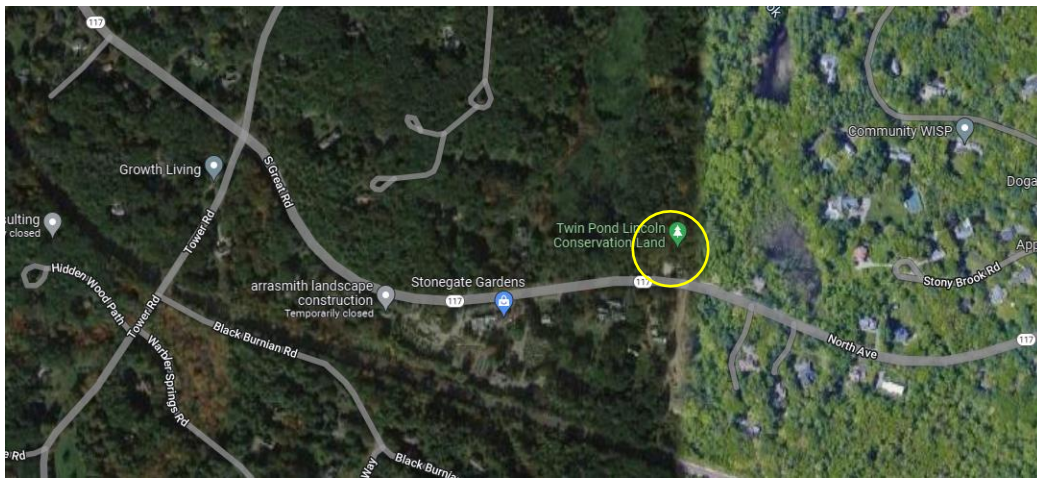


## Stony Brook Trailhead Pollinator Garden

Google Map Address: Twin Pond Lincoln Conservation Land

This garden is located at the Twin Pond/Stony Brook Trailhead Parking Lot. The parking area is a small dirt lot on Route 117 in Lincoln, MA. The lot is located near the Lincoln/Weston Border and is on the north side of the road. When looking at the parking lot from the road, the garden site is to your left.

This site was first planted in Spring of 2021 and LLCT continues to add more plants to the garden. Two rain barrels are located a short distance from the garden as convenient water storage. This site experiences strong weed pressure from the edges.



## Stony Brook Trailhead Pollinator Garden

Google Map Address: Twin Pond Lincoln Conservation Land

Abridged plant list: Blue-stemmed Goldenrod, Butterfly Weed, Foxglove Beardtongue, Hairy Beardtongue, Purple Giant Hyssop, Showy Goldenrod, Wild Lupine, Big Bluestem, Scarlet Bee Balm, Shrubby St. John's Wort, Wild Geranium, Pennsylvania Sedge, Little Bluestem, Calico Aster, Switchgrass, Meadowsweet, Northern Bush Honeysuckle, Beach Plum, Field Discolor.

